

Provider Education

April 2026 | Autoimmune Testing



Effective April 22, 2026, select autoimmune testing for the Methodist Health System will transition from a reference laboratory to **Methodist Jennie Edmundson (MJE) Hospital**. This transition will include changes to testing methodologies and associated CPT codes, including the implementation of an EliA methodology performed on the Thermo Fisher Phadia platform.

As part of this implementation, testing algorithms have been updated and optimized to reflect current best practices in diagnostic evaluation and patient care. The most significant change involves the Celiac Disease Reflexive Cascade, which has been revised to align with recommendations from the American College of Gastroenterology. See Cascade below.

In addition, new testing panels have been introduced to streamline ordering and improve clinical efficiency, including the APS Panel.

Please refer to the attached document for a comprehensive list of the updated Methodist Health System orderables, included tests, CPT codes, methodology changes, reference range changes and interpretation revisions. **Please pay close attention to the reference range and interpretation changes as they vary greatly between the current and new methodologies.**

Some testing will require rebaselining. **Please refer to the separate document titled “Provider Education – Rebaselining of Autoimmune Testing” that covers the plan for rebaselining.**

Test Performed: Monday, Wednesday and Friday

Turn – Around – Time: 1-5 days

Specimen Requirements: Refer to test directory on www.thepathologycenter.org for each specific orderable.

Please direct any questions to Dr. Becki Goldberg-Kahn, Tia Brandenburg and/or Ashley Taylor at 712-396-6311 or visit www.thepathologycenter.org for additional information.



Autoimmune Orderable Tests with Comparisons to Current Methodologies

| <u>Orderable</u> | <u>Orderable Includes</u> | <u>CPT Code(s)</u> | <u>Current Methodology</u> | <u>New Methodology</u> | <u>Current Reference Range</u> | <u>New Reference Range</u> | <u>Current Interpretation</u> | <u>New Interpretation</u> |
|---------------------------------------|---|--------------------|---|--|----------------------------------|----------------------------------|--|---|
| Myeloperoxidase IgG Antibody (MPO Ab) | Myeloperoxidase IgG Antibody | 86036 | Semi-Quantitative Multiplex Bead Assay | EliA Florescence Enzyme Immunoassay | ≤ 19 AU/mL | < 3.5 U/mL | Neg: ≤ 19 AU/mL Equivocal: 20-25 AU/mL Pos: ≥ 26 AU/mL | Neg: < 3.5 U/mL Equivocal: 3.5-5.0 U/mL Pos: > 5.0 U/mL |
| PR3 IgG Antibody (PR3 Ab) | PR3 IgG Antibody | 86036 | Semi-Quantitative Multiplex Bead Assay | EliA Florescence Enzyme Immunoassay | ≤ 19 AU/mL | < 2.0 U/mL | Neg: ≤ 19 AU/mL Equivocal: 20-25 AU/mL Pos: ≥ 26 AU/mL | Neg: < 2.0 U/mL Equivocal: 2.0-3.0 U/mL Pos: > 3.0 U/mL |
| Anti-mitochondrial Antibody (AMA) | Mitochondrial (M2) IgG Antibody | 86381 | Semi-Quantitative Enzyme-Linked Immunosorbent Assay (ELISA) | EliA Florescence Enzyme Immunoassay | ≤ 24.9 Units | < 4 U/mL | Neg: ≤ 20.0 Units Equivocal: 20.1-24.9 Units Pos: ≥ 25.0 Units | Neg: < 4 U/mL Equivocal: 4-6 U/mL Pos: > 6 U/mL |
| Antiphospholipid Panel (APS Panel) | Cardiolipin Antibodies IgM & IgG, B2-Glycoprotein I IgM & IgG Antibody, Lupus Anticoagulant | 86147, 86146 | Chromogenic Assay / Semi-Quantitative Enzyme-Linked Immunosorbent Assay (ELISA) / Electromagnetic Mechanical Clot Detection | EliA Florescence Enzyme Immunoassay | See individual tests below | See individual tests below | See individual tests below | See individual tests below |
| Cardiolipin Antibodies IgM and IgG | Cardiolipin IgM Antibody | 86147 | Semi-quantitative enzyme-linked immunosorbent assay | EliA Florescence Enzyme Immunoassay | ≤ 12 MPL | < 10 MPL- U/mL | Neg: ≤ 12 MPL Indeterminate: 13-19 MPL Low to Moderate Positive: 20-80 MPL High Pos: ≥ 81 MPL | Neg: < 10 MPL-U/mL Equivocal: 10-40 MPL-U/mL Pos: > 40 MPL-U/mL |
| Cardiolipin Antibodies IgM and IgG | Cardiolipin IgG Antibody | 86147 | Semi-quantitative enzyme-linked immunosorbent assay | EliA Florescence Enzyme Immunoassay | ≤ 14 GPL | < 10 GPL- U/mL | Neg: ≤ 14 GPL Indeterminate: 15-19 GPL Low to Moderate Positive: 20-80 GPL High: ≥ 81 GPL | Neg: < 10 GPL-U/mL Equivocal: 10-40 GPL-U/mL Pos: > 40 GPL-U/mL |



| <u>Orderable</u> | <u>Orderable Includes</u> | <u>CPT Code(s)</u> | <u>Current Methodology</u> | <u>New Methodology</u> | <u>Current Reference Range</u> | <u>New Reference Range</u> | <u>Current Interpretation</u> | <u>New Interpretation</u> |
|---|--|--------------------|---|--|--------------------------------|----------------------------|---|--|
| B2 Glycoprotein I IgM and IgG Antibodies | B2-Glycoprotein I IgM Antibody | 86146 | Semi-quantitative enzyme-linked immunosorbent assay | EliA Florescence Enzyme Immunoassay | < 21 SMU | < 7 U/mL | None given | Neg: < 7 U/mL Equivocal: 7-10 U/mL Pos: > 10 U/mL |
| B2 Glycoprotein I IgM and IgG Antibodies | B2-Glycoprotein I IgG Antibody | 86146 | Semi-quantitative enzyme-linked immunosorbent assay | EliA Florescence Enzyme Immunoassay | < 21 SGU | < 7 U/mL | None given | Neg: < 7 U/mL Equivocal: 7-10 U/mL Pos: > 10 U/mL |
| Thyroid Antibodies | Thyroid Peroxidase IgG Antibody, Thyroglobulin IgG Antibody | 86376, 86800 | Quantitative Chemiluminescent Immunoassay | EliA Florescence Enzyme Immunoassay | See individual tests below | See individual tests below | See individual tests below | See individual tests below |
| Anti-thyroglobulin | Thyroglobulin IgG Antibody | 86800 | Quantitative Chemiluminescent Immunoassay (CLIA) | EliA Florescence Enzyme Immunoassay | 0.0-4.0 IU/mL | < 40 IU/mL | ≤ 4.0 IU/mL indicates negative result for thyroglobulin antibodies | Neg: < 40 IU/mL Equivocal: 40-60 IU/mL Pos: > 60 IU/mL |
| Anti-Thyroid Peroxidase (Anti-TPO, microsomal antibody) | Thyroid Peroxidase IgG Antibody | 86376 | Quantitative Chemiluminescent Immunoassay | EliA Florescence Enzyme Immunoassay | 0.0-9.0 IU/mL | < 25 IU/mL | None given | Neg: < 25 IU/mL Equivocal: 25-35 IU/mL Pos: > 35 IU/mL |
| Cardiolipin Antibody IgA | Cardiolipin IgA Antibody | 86147 | Semi-Quantitative Enzyme-Linked Immunosorbent Assay (ELISA) | EliA Florescence Enzyme Immunoassay | ≤ 11 APL | < 14 APL-U/mL | Neg: ≤ 11 APL Indeterminate: 12-19 APL Low to Moderate Pos: 20-80 APL High Pos: ≥ 81 APL | Neg: < 14 APL-U/mL Equivocal: 14-20 APL-U/mL Pos: > 20 APL-U/mL |
| Celiac Disease Reflexive Cascade | Tissue Transglutaminase IgA, Total IgA | 86364, 82784 | Semi-Quantitative Particle-Based Multianalyte Technology (PMAT) | EliA Florescence Enzyme Immunoassay | See individual tests below | See individual tests below | See individual tests below See attached ARUP reflex cascade | See individual tests below See attached NMHS reflex cascade |
| Tissue Transglutaminase Ab IgA (tTg IgA, tTg Ab IgA) | Tissue Transglutaminase IgA | 86364 | Semi-Quantitative Particle-Based Multianalyte Technology (PMAT) | EliA Florescence Enzyme Immunoassay | 0.00-4.99 FLU | < 7 EliA U/mL | See attached ARUP reflex cascade | Neg: < 7 EliA U/mL Equivocal: 7-10 EliA U/mL Pos: > 10 EliA U/mL |

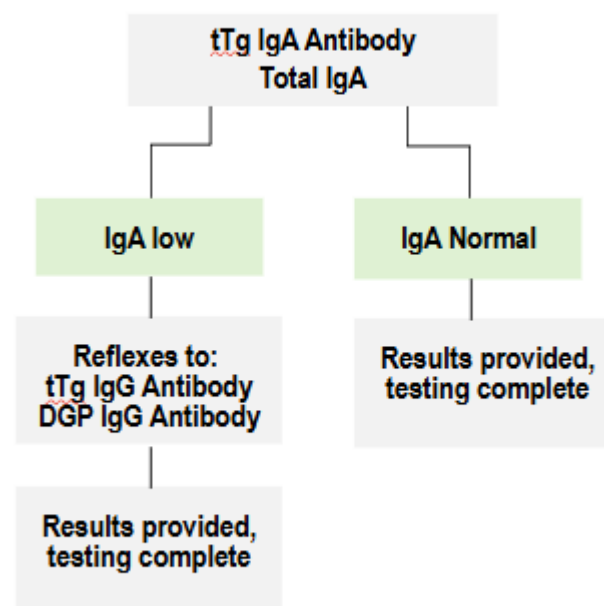


| <u>Orderable</u> | <u>Orderable Includes</u> | <u>CPT Code(s)</u> | <u>Current Methodology</u> | <u>New Methodology</u> | <u>Current Reference Range</u> | <u>New Reference Range</u> | <u>Current Interpretation</u> | <u>New Interpretation</u> |
|--|---|--------------------|---|-------------------------------------|--------------------------------|----------------------------|---|--|
| Tissue Transglutaminase Ab IgG (tTg IgG, tTg Ab IgG) | Tissue Transglutaminase IgG | 86364 | Semi-Quantitative Particle-Based Multianalyte Technology (PMAT) | EliA Florescence Enzyme Immunoassay | 0.00 - 4.99 FLU | < 7 EliA U/ML | See attached ARUP reflex cascade | Neg: < 7 EliA U/mL Equivocal: 7-10 EliA U/mL Pos: > 10 EliA U/mL |
| Gliadin Antibody IgG (DGP IgG) | Gliadin Peptide IgG Antibody | 86258 | Semi-Quantitative Particle-Based Multianalyte Technology (PMAT) | EliA Florescence Enzyme Immunoassay | 0.00-4.99 FLU | < 7 EliA U/ML | See attached ARUP reflex cascade | Neg: < 7 EliA U/mL Equivocal: 7-10 EliA U/mL Pos: > 10 EliA U/mL |
| Cyclic Citrullinated Peptide IgG (CCP Ab IgG) | Cyclic Citrullinated Peptide IgG Antibody | 86200 | Semi-Quantitative Enzyme-Linked Immunosorbent Assay (ELISA) | EliA Florescence Enzyme Immunoassay | ≤ 19 Units | < 7 EliA U/mL | Neg: ≤ 19 units Weak Pos: 20-39 units Moderate Pos: 40-59 units Strong Pos: ≥ 60 units | Neg: < 7 EliA U/mL Equivocal: 7-10 EliA U/mL Pos: > 10 EliA U/mL |



New Celiac Disease Reflex Cascade
(Nebraska Methodist Health System)

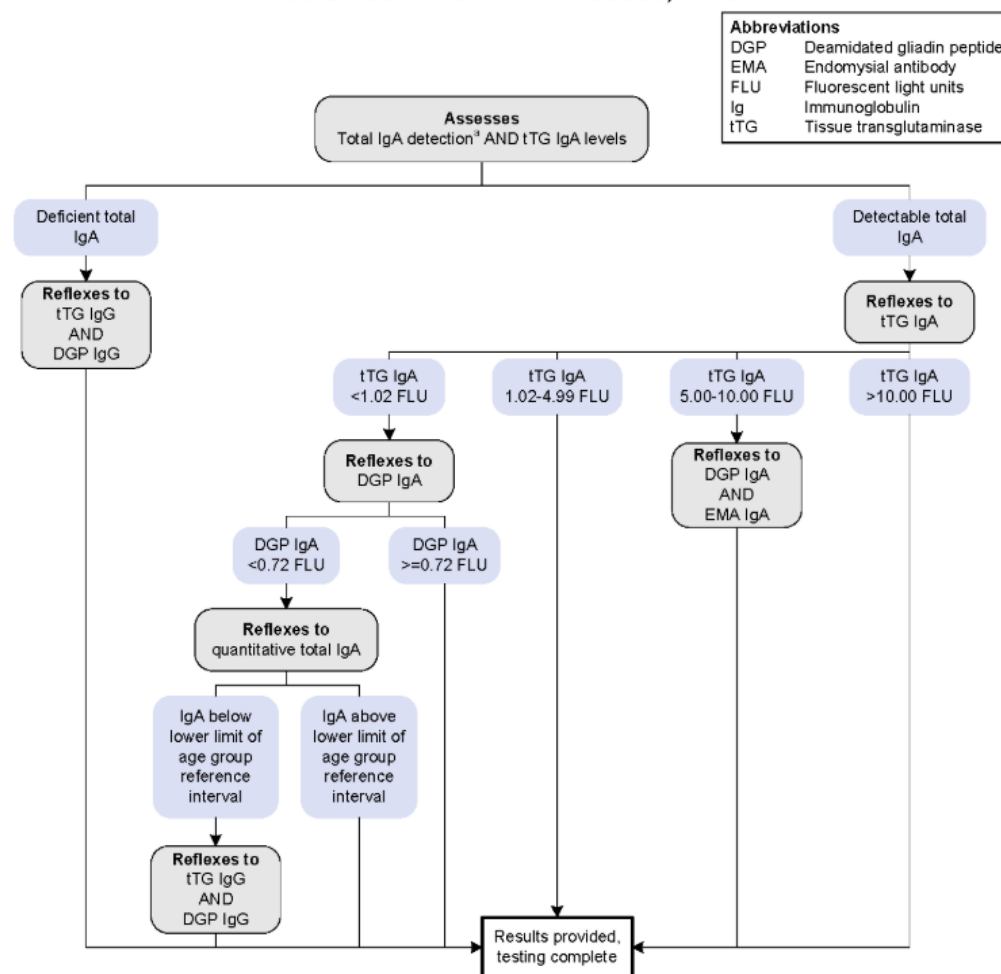
NMHS Celiac Disease Reflex Cascade





Current Celiac Disease Reflex Cascade (ARUP Reference Lab)

Celiac Disease Reflexive Cascade, Serum



¹This assay does not measure total IgA concentrations but flags samples if IgA is deficient/undetectable.